

# \$0 to \$60k

Transform income potential with a successful IT apprenticeship



JobWorks Inc. helps 10,000+ people each year build their skills, earn a certification, or find good-paying jobs.



# Our approach to workforce development is **unique**.



3

# We deliver nearly **any training content**, anywhere.



4



LOCAL EXPERTISE  
**NATIONAL REACH.**

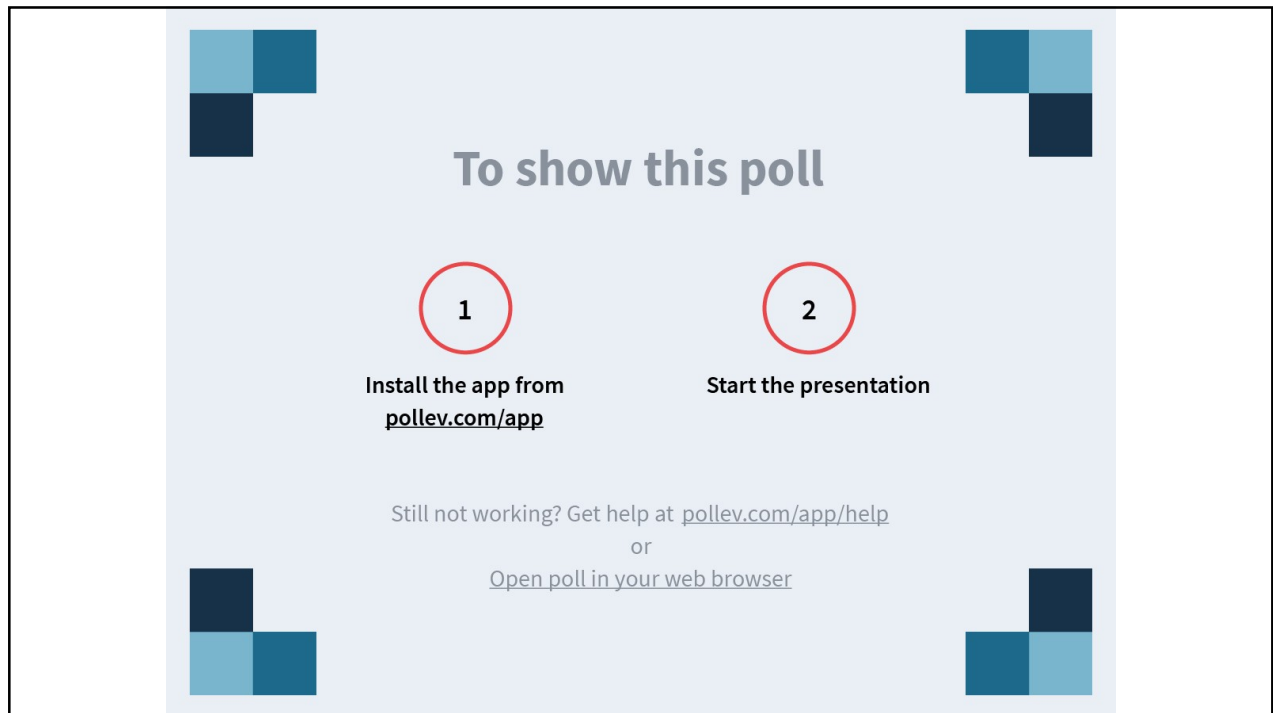
5



Join the conversation!

Text the phrase: **JCASELLA494**

To this number: **22333**

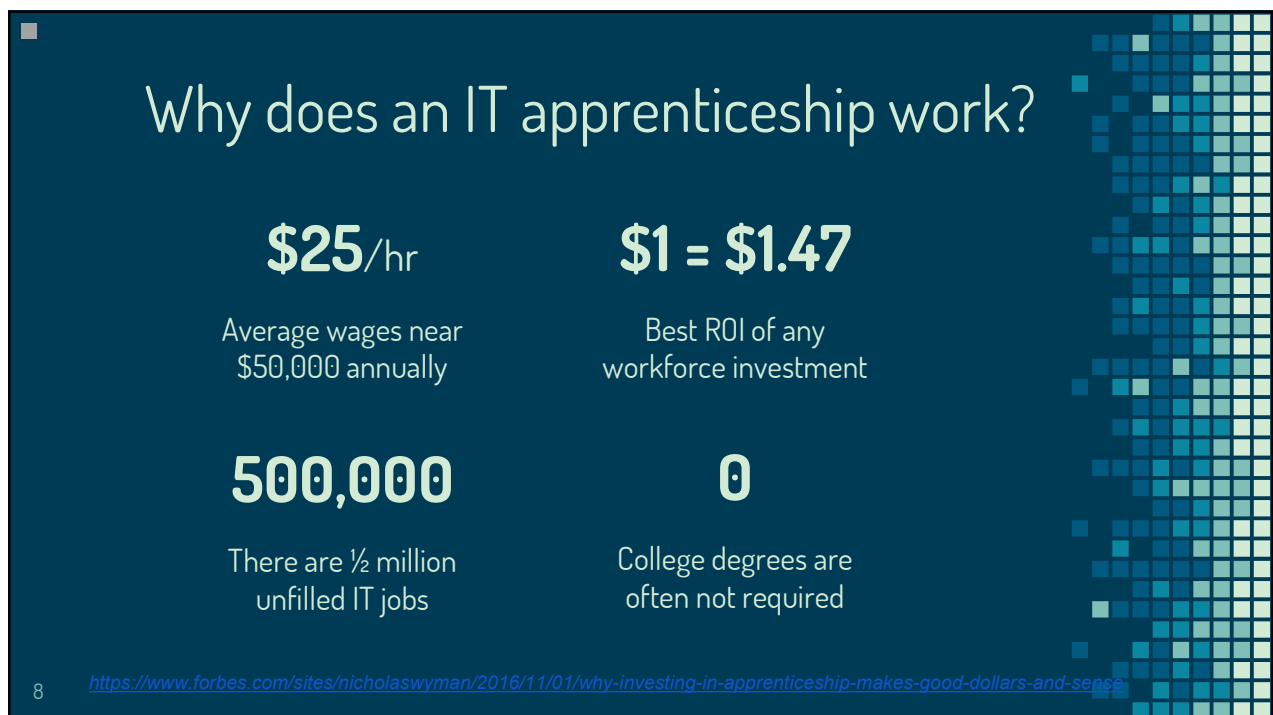


**To show this poll**

**1**  
Install the app from [pollev.com/app](http://pollev.com/app)

**2**  
Start the presentation

Still not working? Get help at [pollev.com/app/help](http://pollev.com/app/help)  
or  
[Open poll in your web browser](#)



## Why does an IT apprenticeship work?

<b>\$25/hr</b> Average wages near \$50,000 annually	<b>\$1 = \$1.47</b> Best ROI of any workforce investment
<b>500,000</b> There are 1/2 million unfilled IT jobs	<b>0</b> College degrees are often not required

8 <https://www.forbes.com/sites/nicholaswyman/2016/11/01/why-investing-in-apprenticeship-makes-good-dollars-and-sense>

## Consider the ROI of an IT apprenticeship

### 4-Year College Program

\$100k for 4-year degree  
\$50k first-year salary  
Minimum of 4 years

Return on Investment?

**Spend \$2 to earn \$1**

### IT Apprenticeship Program

\$0 for 3 years of industry  
experience & valuable credentials  
\$56k salary for IT Support

Return on Investment?

**Spend \$0 to earn \$56k**

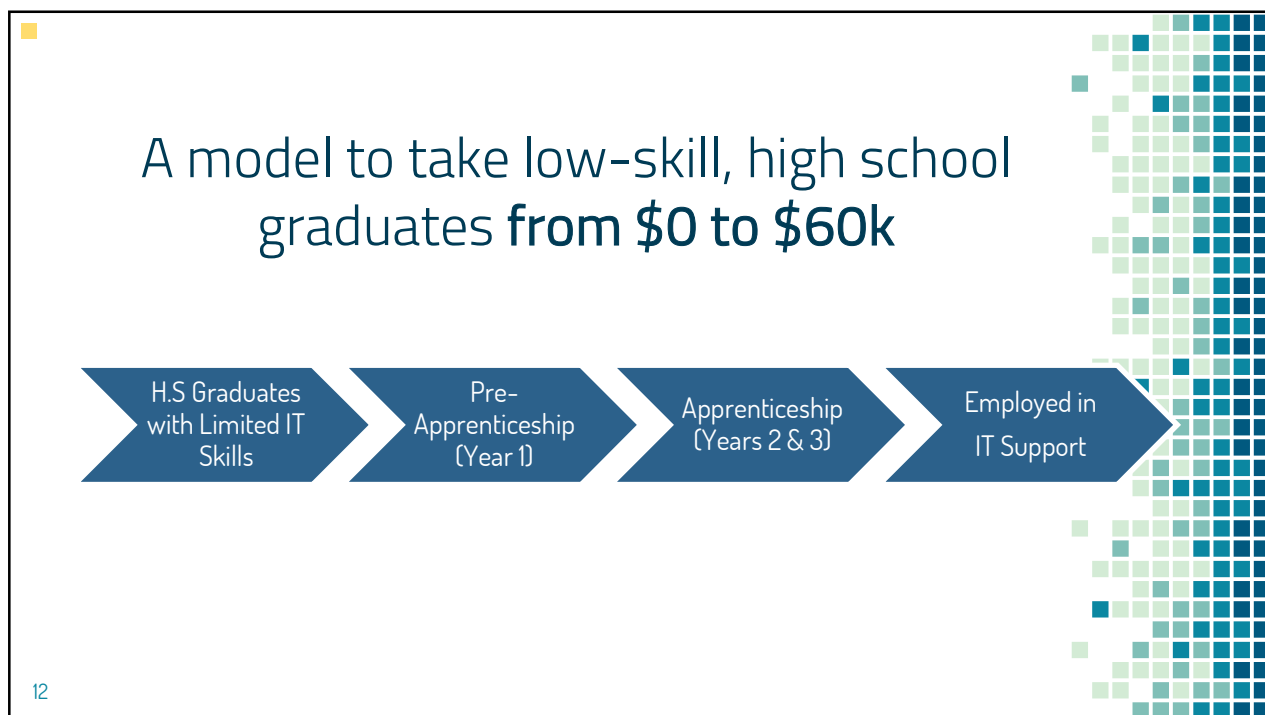
9

Philadelphia's **Urban Technology Project** is a renowned model for IT Apprenticeship.

500+ individuals prepared for **IT support roles** through this apprenticeship & pre-apprenticeship, since 2002.



10





## The approach works!

89%

Certification Rate

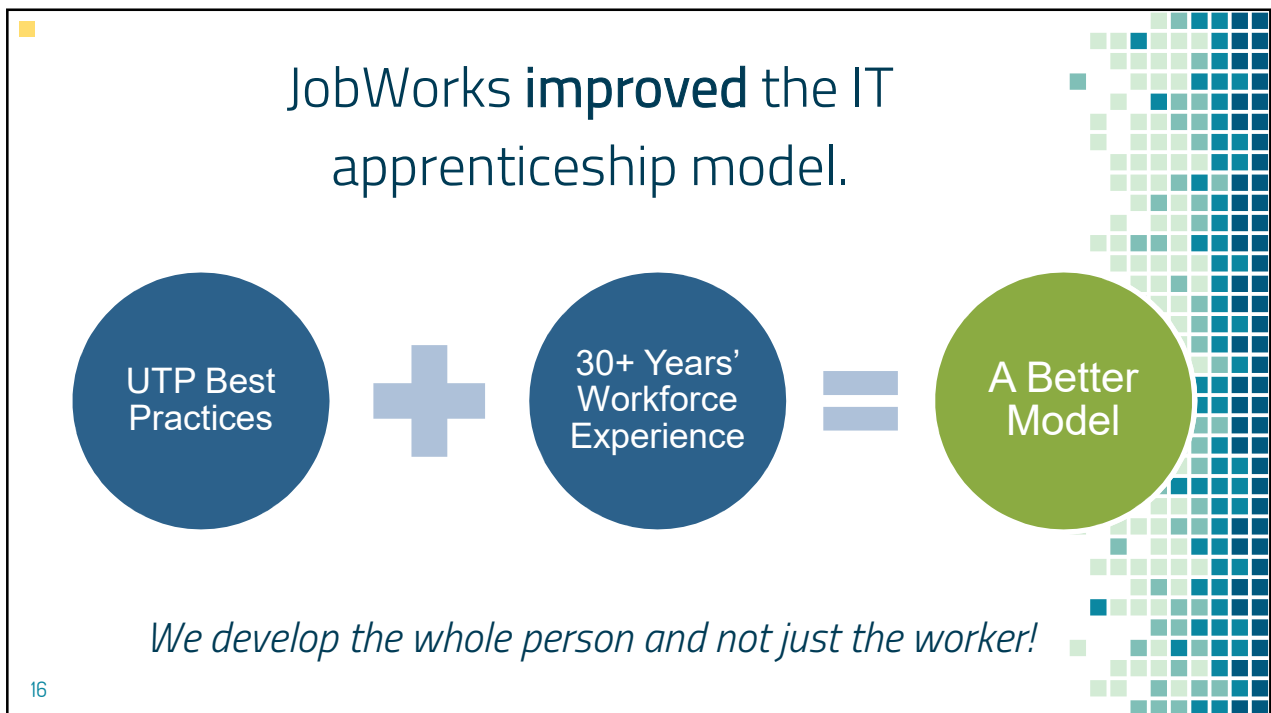
93%

Average Graduate Job Placement Rate

\$26

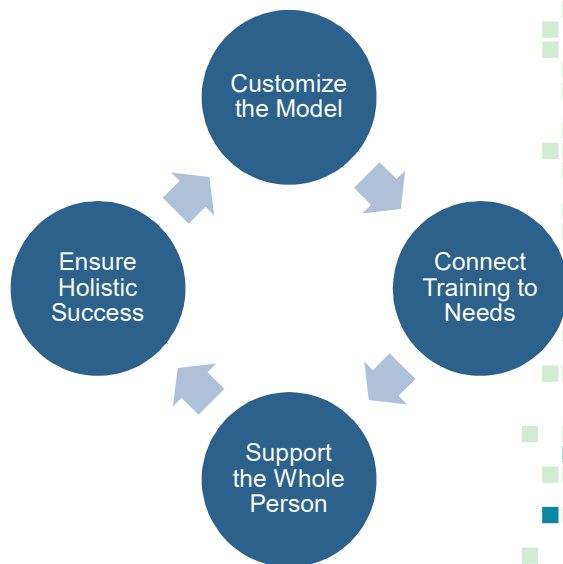
Up to \$26 per Hour







This improved apprenticeship model is built on 4 pillars.



17

## Pillar 1: Customize the model to fit the stakeholders

Apprentices, Employers, & Funders

3,500 hours OJT / 480 hours RTI

At least 3 industry certs.

## Pillar 2: Connect training to real-time employer needs

Industry certifications.

Essential soft skills & coaching.

Student-driven niche training.

### To show this poll

1

Install the app from [pollev.com/app](http://pollev.com/app)

2

Start the presentation

Still not working? Get help at [pollev.com/app/help](http://pollev.com/app/help)  
or

[Open poll in your web browser](#)



21

## Data helps direct our training decisions.

#	Student	Practice Exam - Baseline	Practice Exam - 4/1/19	Practice Exam - 4/15/19	Practice Exam - 4/29/19	Practice Exam - Gain/Loss	Reading Progress	Attendance %
1	Lawrence	41%	54%	80%	81%	39%	41%	93%
2	Sherry	43%	51%	68%	84%	25%	41%	93%
3	Darryl	46%	54%	69%	71%	23%	26%	87%
4	John	65%	94%	96%	99%	31%	91%	100%
5	Michael	34%	86%	88%	90%	54%	70%	80%
6	Susan	35%	83%	85%	87%	50%	65%	100%
7	Yvonne	28%	44%	80%	85%	52%	82%	100%
8	Bill	23%	53%	74%	85%	51%	63%	93%
9	Samuel	31%	51%	54%	59%	23%	40%	80%
10	Jose	39%	53%	55%	86%	16%	51%	93%
11	Andrea	26%	29%	63%	83%	37%	53%	100%
12	Ronald	45%	54%	50%	59%	5%	18%	87%
13	Shaheed	44%	54%	58%	81%	14%	79%	93%



## Pillar 3: Support the whole person

One-on-one Career & Life Coaching

Mindfulness, E/I, & Meditation

Preparing for a Professional Culture

<https://www.entrepreneur.com/article/310870>



## Pillar 4: Ensure **holistic** success

Financial Education & Goal Setting

OJT Check-ins

Free College Credits & Scholarships

## Secure funding and expand with private, local, state, and federal sources.

- WIOA ITA accounts
- OJT funding
- Corporate sponsorship
- Grant funding
- Foundational support

## Want to launch an IT apprenticeship? Talk to JobWorks, Today.

We will help you **secure the funding**, customize the model, and maintain the apprenticeship standards as required by your state & USDOL.

Let's connect!

**Beth St. Clair**

*Apprenticeship Expansion*

JobWorks, Inc.

[bstclair@jobworksinc.org](mailto:bstclair@jobworksinc.org)

(215) 495-3209

**John Casella**

*Regional Director*

JobWorks, Inc.

[jcasella@jobworksinc.org](mailto:jcasella@jobworksinc.org)

(856) 220-9064